

Printer Sharing

This document describes how a printer can be shared, including among different Windows operating systems. The document applies to Windows XP, Windows Vista, Windows 7 and Windows Server 2008 ó either 32 bit or 64 bit systems. Following are the restrictions when a printer is shared.

- Status is available on the local PC but not available on the remote system.
- Language monitor functionality is not available on any remote system.
- The user should have administrative privileges on Windows Vista, Windows 7 and Windows Server 2008 when trying to install the driver for a printer to be shared on another system.

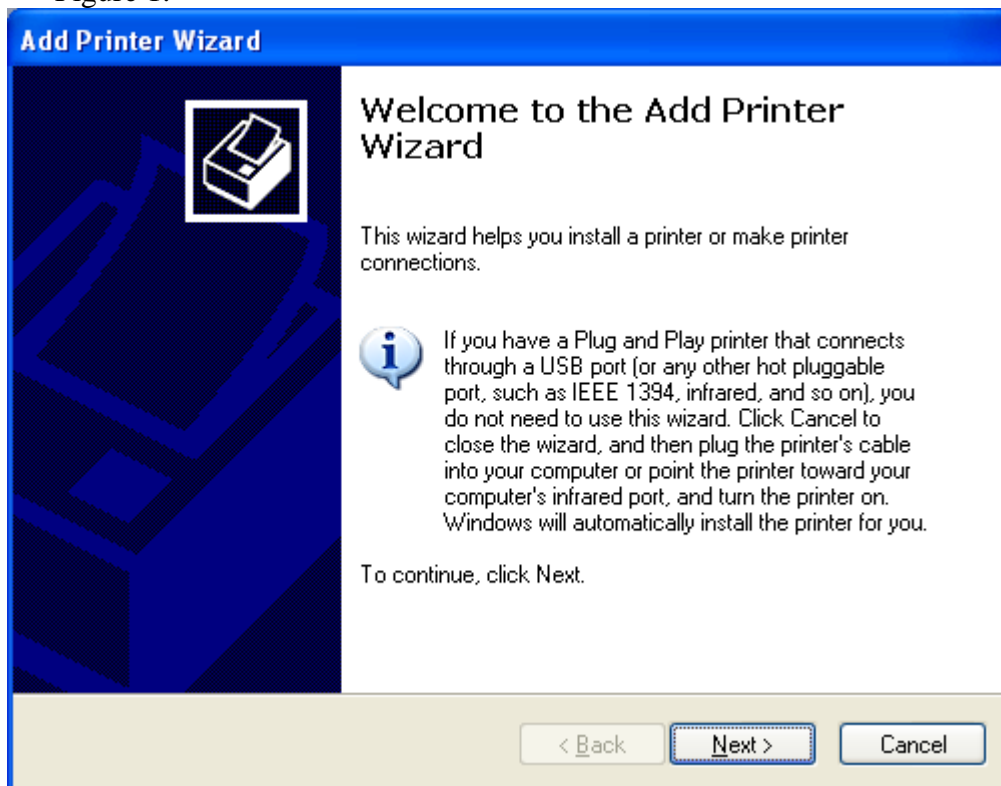
Sample printer sharing using Windows XP and Windows 7 systems.

Instructions to access from Windows XP a shared printer that is installed on a network accessible Windows 7 system.

If the printer is already installed on Windows 7, right click its icon and choose sharing in the dropdown, else install the printer. This can be done by plugging in the printer and pointing the new hardware wizard to the driver, or by first installing the driver and then plugging in the printer.

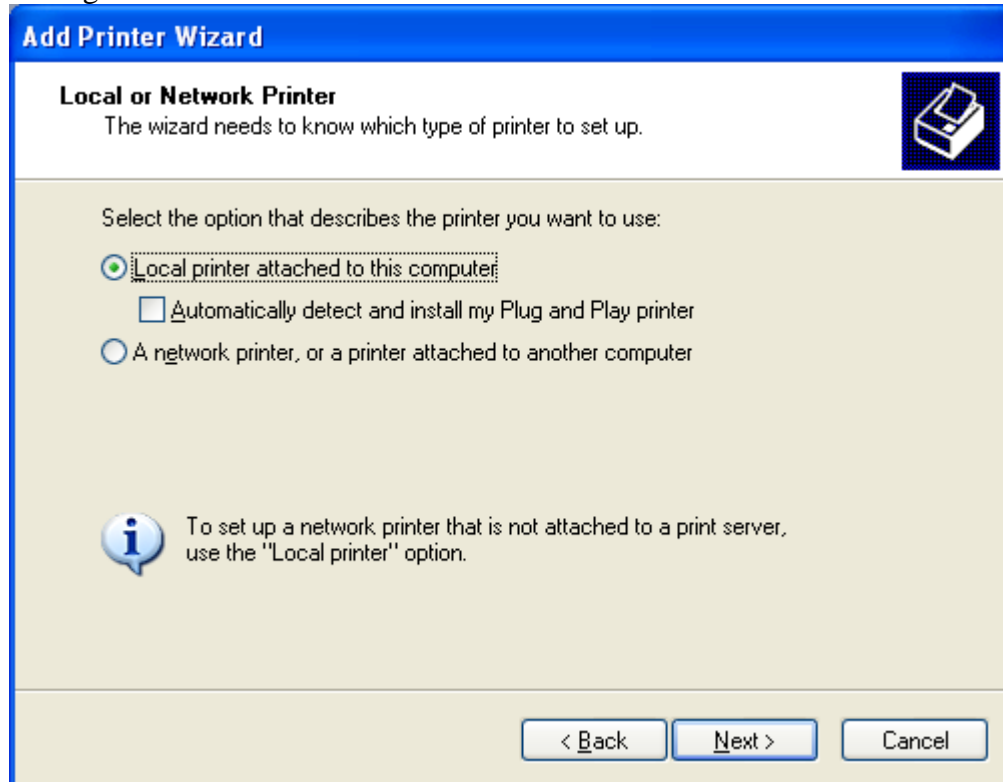
1. On Windows XP, launch the Add Printer Wizard as shown in Figure 1 and click on Next.

Figure 1.



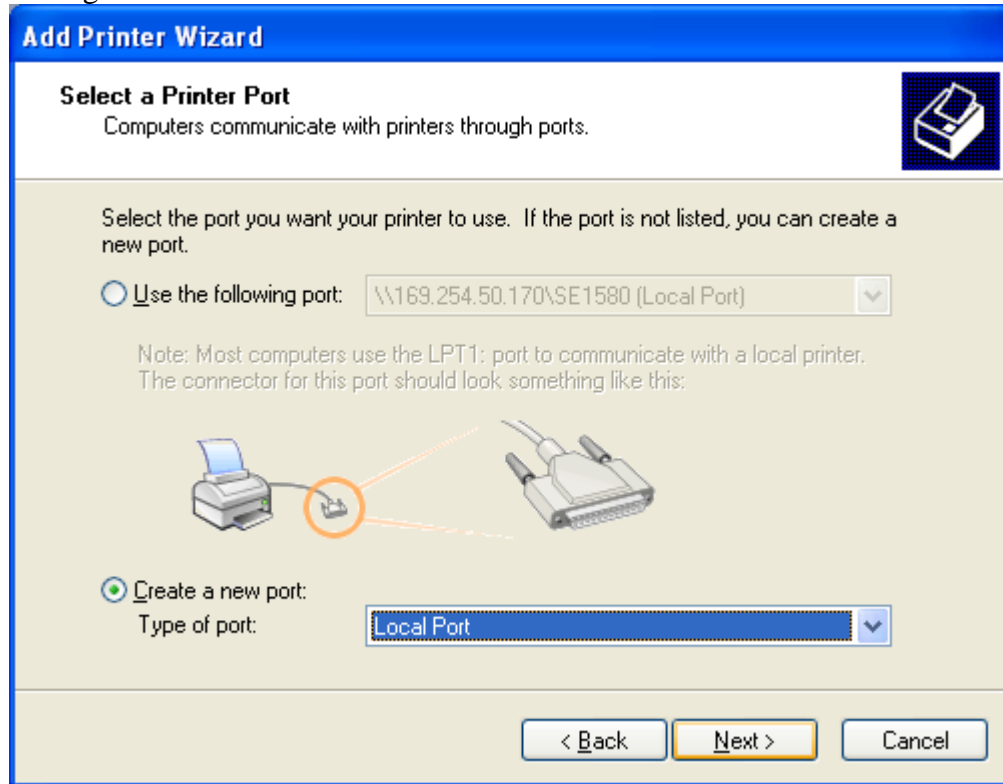
2. Select the "Local printer attached to this computer" radio button as shown in Figure 2 and click on "Next".

Figure 2.



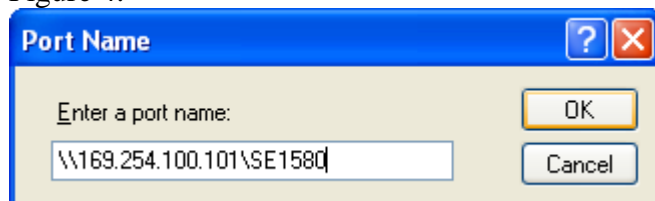
3. If the printer is being installed on this system for the first time as a shared printer select the **öCreate a new portö** radio button and **öLocal Portö** option. Click on **öNextö**.

Figure 3.



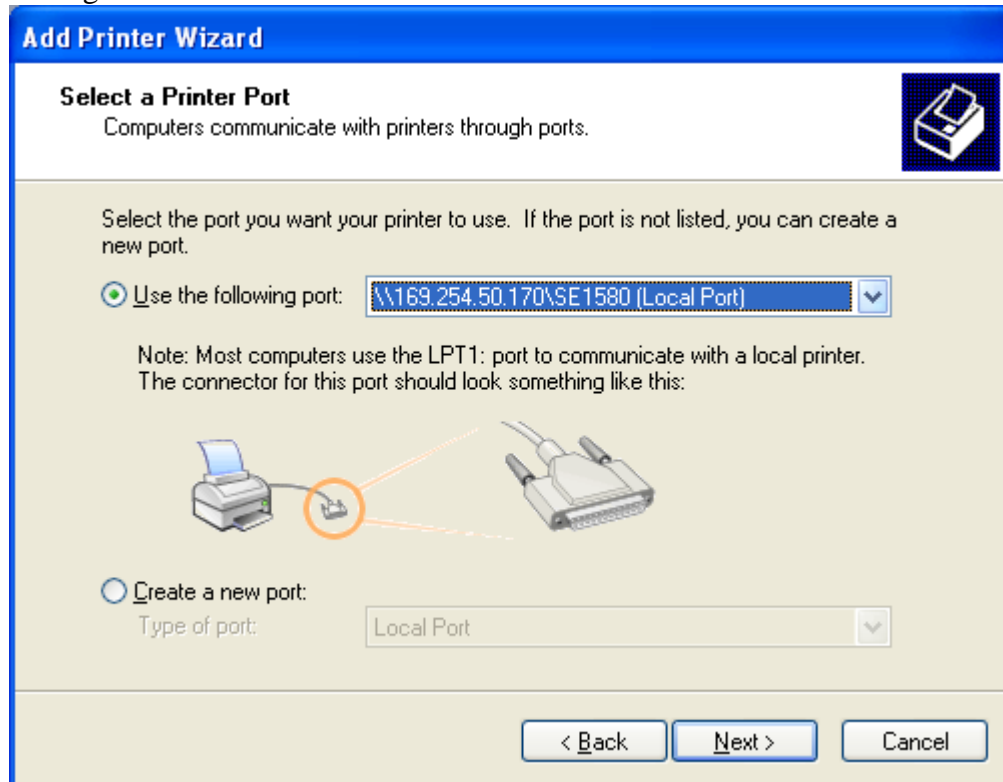
4. Enter the IPAddress / network host name in the format, [\\IPAddress\PrinterName](#) or [\\HostName\PrinterName](#) for the Windows 7 system on which the printer is installed and the shared printer name in the dialog box as shown in Figure 4 and click on OK.

Figure 4.



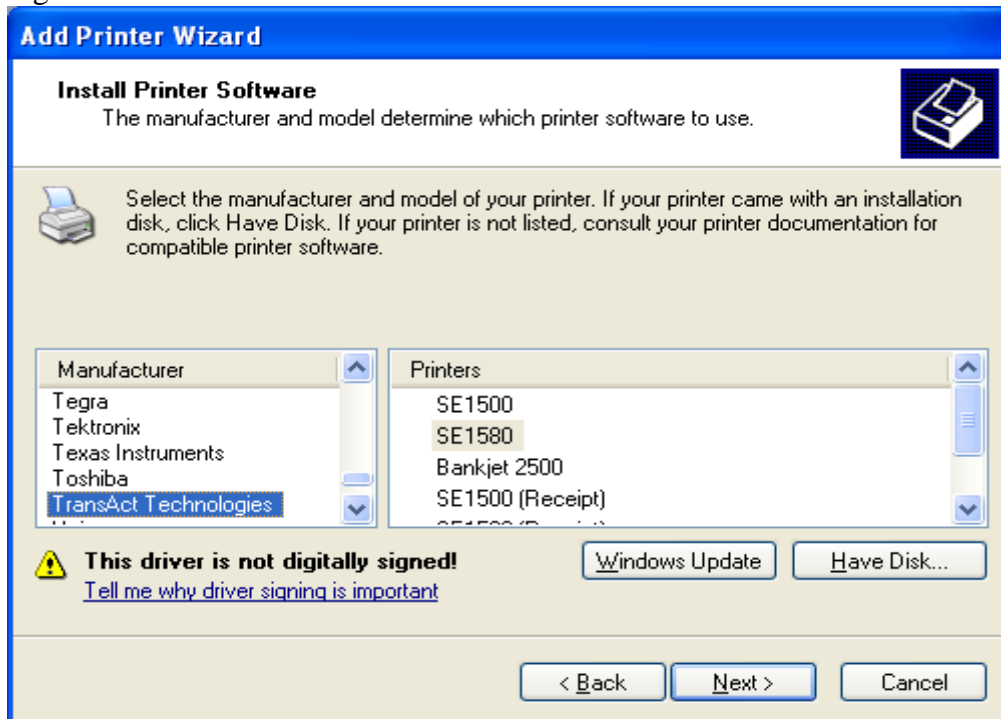
5. If the printer port already exists on the Windows XP system select the port instead of creating a new port and click on "Next".

Figure 5.



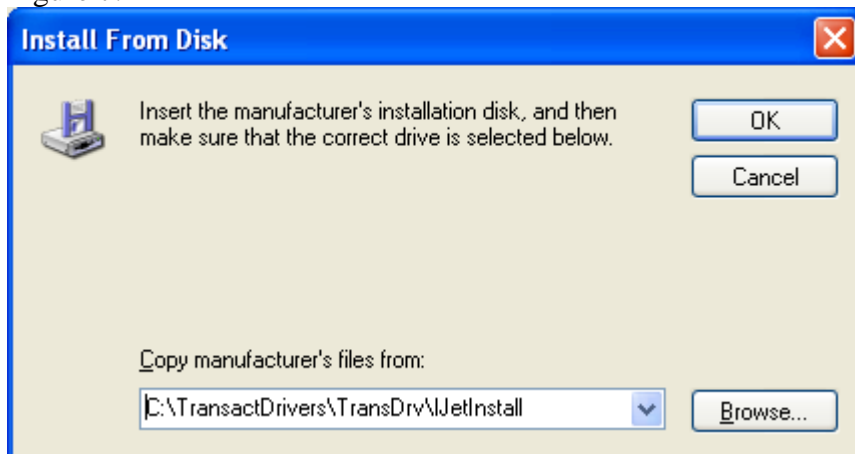
6. If the printer driver had been installed prior to the current installation, there will be a Transact selection in the manufacturer section as shown in Figure 6. If this is a new install then Transact won't be seen. In either case click on "Have Disk" to install the latest Transact Windows Driver.

Figure 6.



7. Point to the correct inf file for the driver install and click "OK" to continue the printer installation.

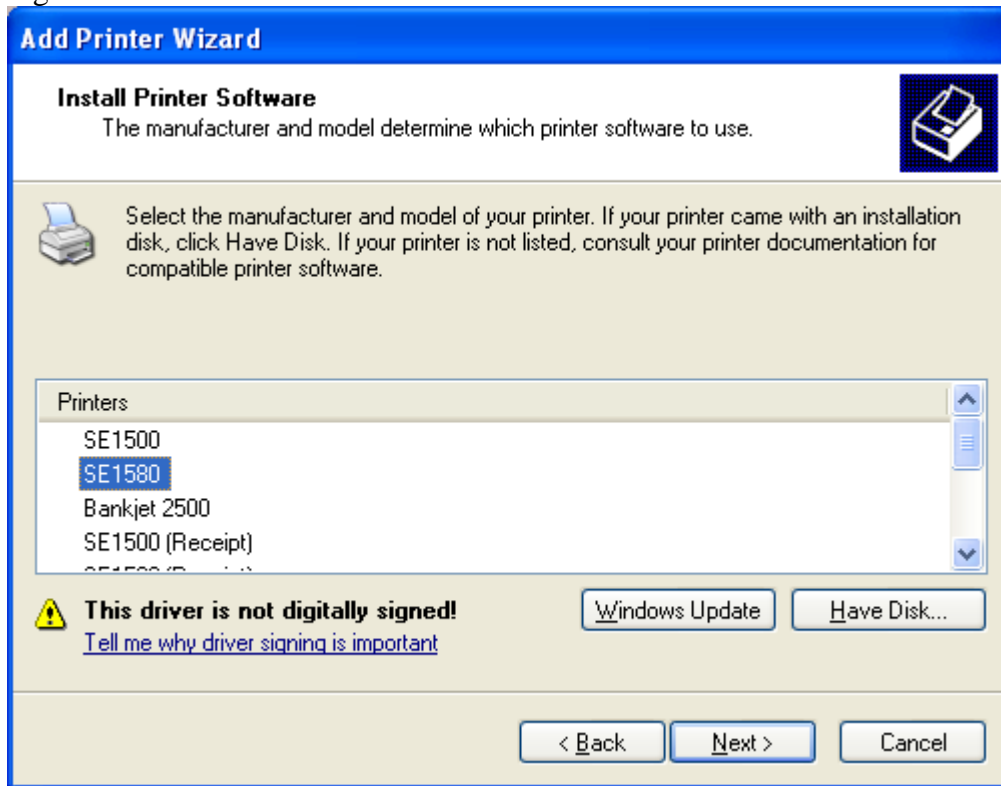
Figure 7.



8. Select the intended printer from amongst the list of printers to proceed and click on **Next**.

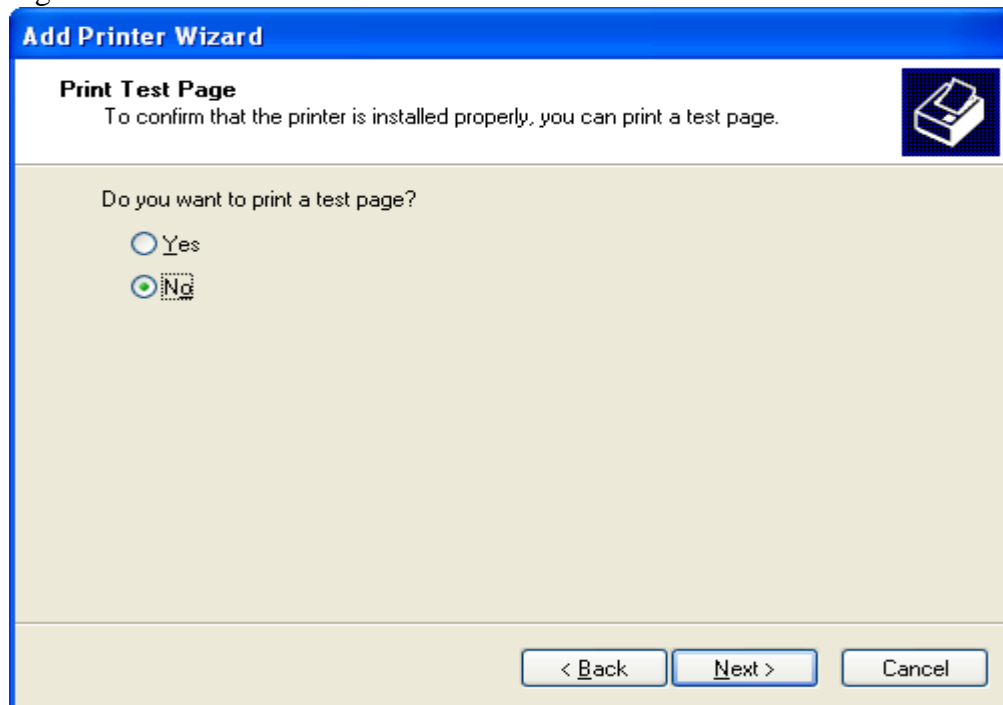
Note: The remote system can choose any of the printer models given in the Wizard's Printers list. This is governed by the inf file being installed; not the connection or the driver that is on the host. Keep in mind that the printer property settings of the remote driver should be compatible with the hosted printer model and firmware configuration in order to achieve the expected printout.

Figure 8.



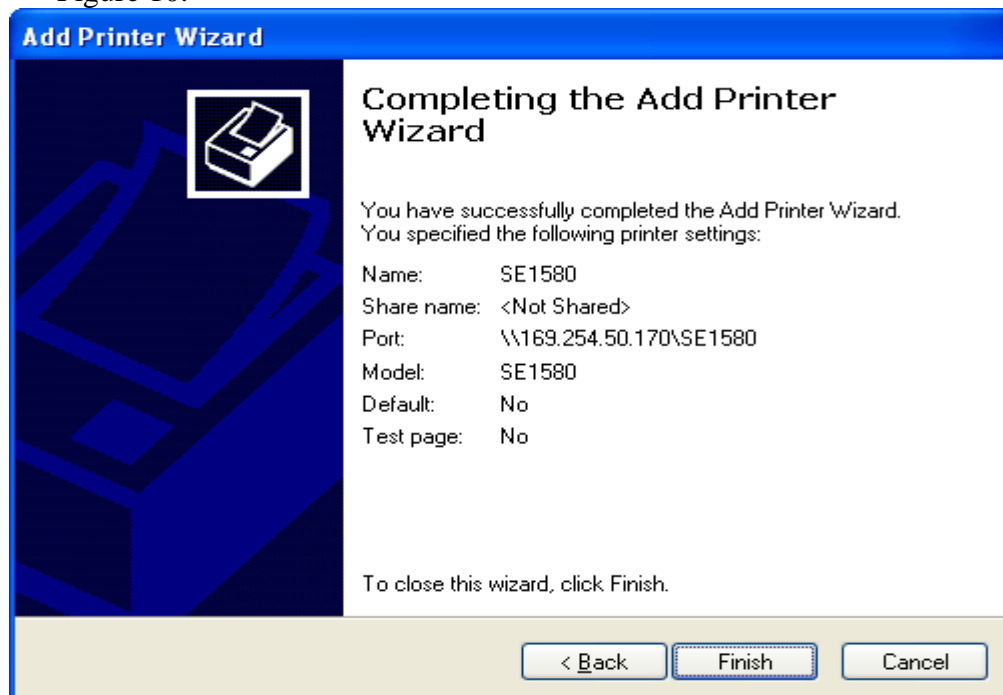
9. Continue through rest of the printer installation wizard to complete the printer installation. Do not print a test page when presented with the option as in Figure 10. A test page cannot be printed at this point.

Figure 9.



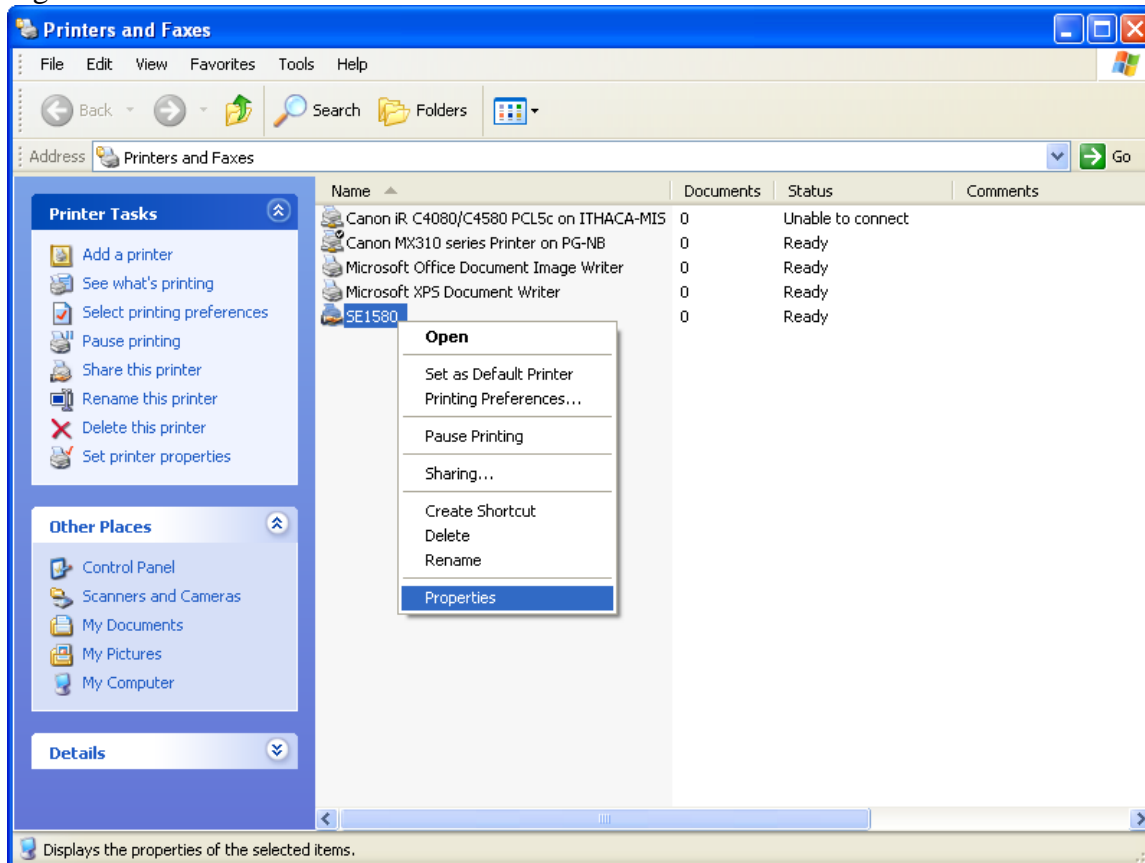
10. Click on 'Finish' on the last screen to complete the printer installation.

Figure 10.



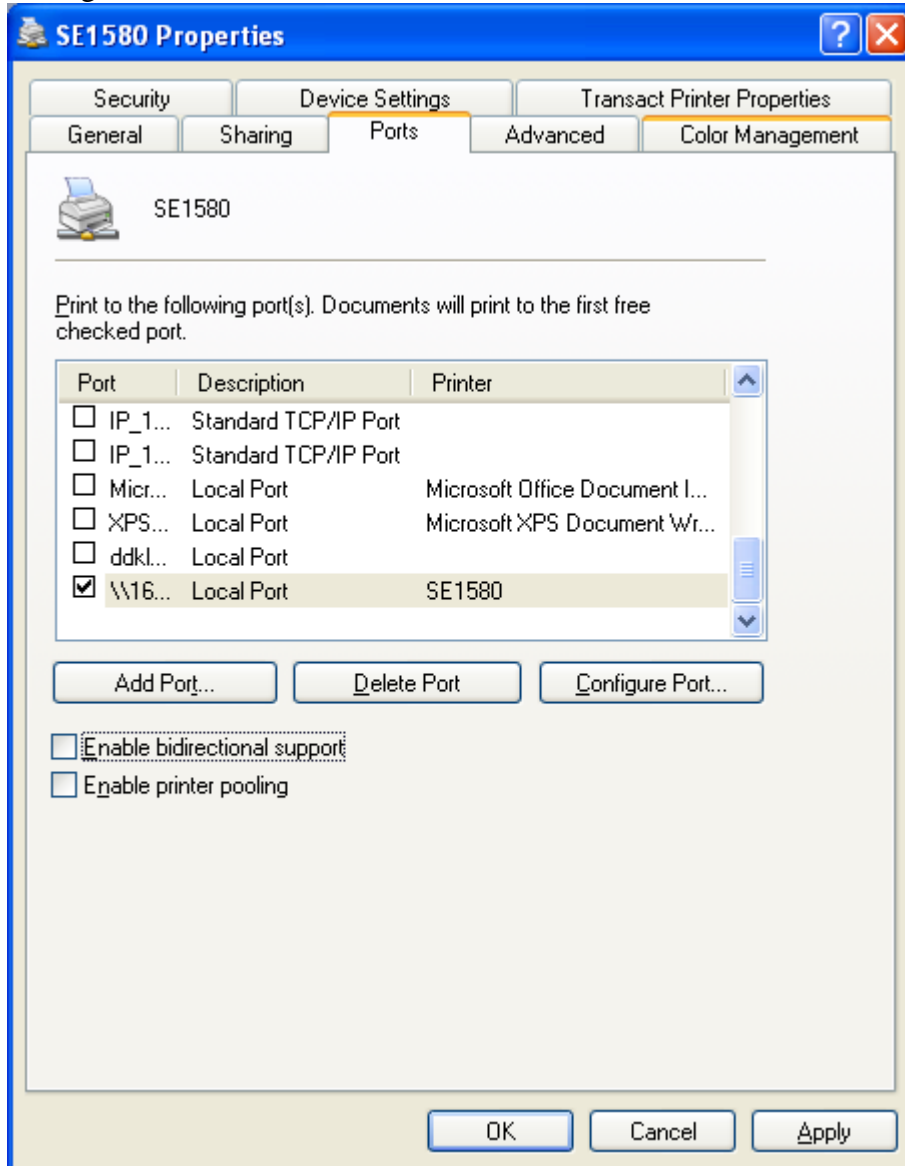
11. Once the printer is successfully installed it can be seen in the Printers and Faxes window. Right click on the printer and select Properties in the drop down menu box.

Figure 11.



12. Select the **Ports** tab in the property window that is displayed. Under the ports listing uncheck the **Enable bidirectional support** checkbox as shown in Figure 13 and click apply or OK.

Figure 12.



This completes the shared printer installation on a XP system. Once this done the printer can be used to print a test page and for application printing.

Sharing can be similarly accomplished on all the operating systems listed in the document.